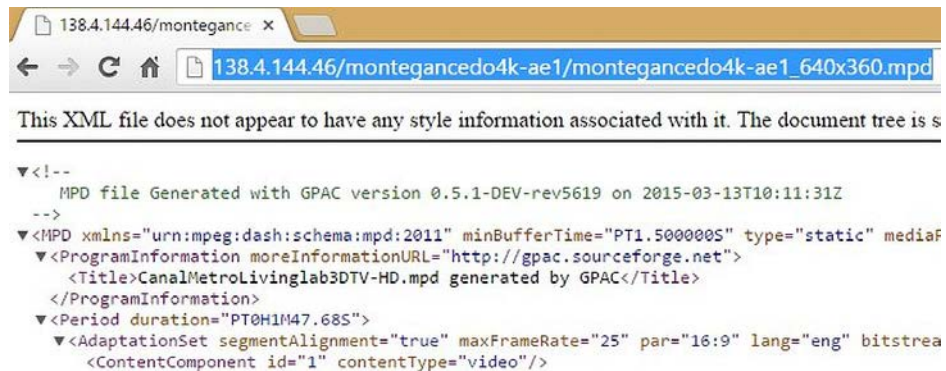


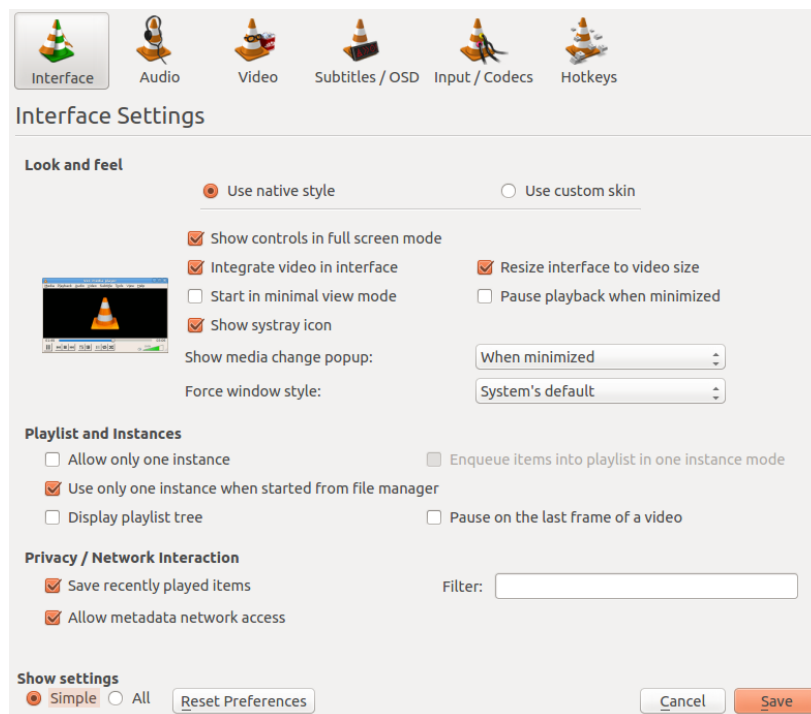
How to watch videos in HTTP Adaptive Streaming

For watching the videos in HTTP Adaptive Streaming follow the next steps:

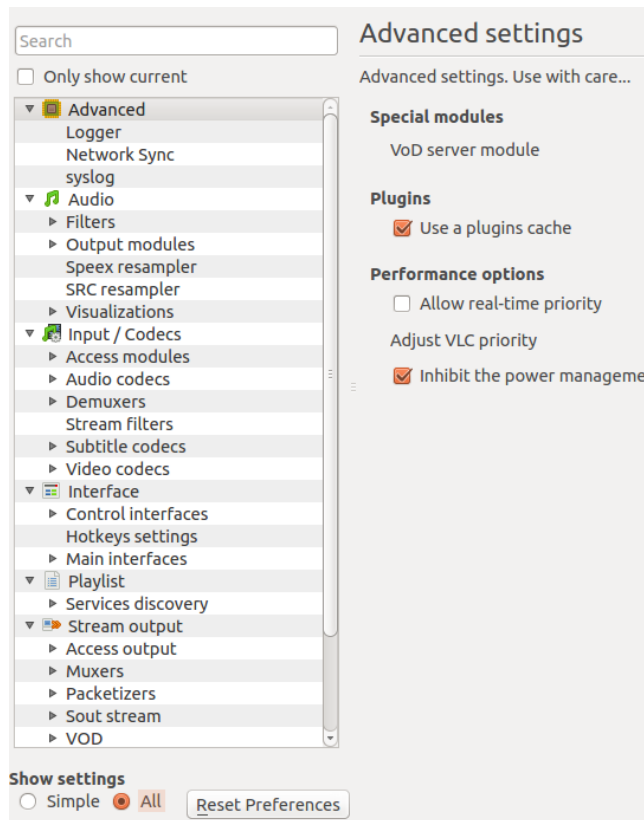
1. Click the image of the video to watch.
2. Copy the url of file mpd that will appear.



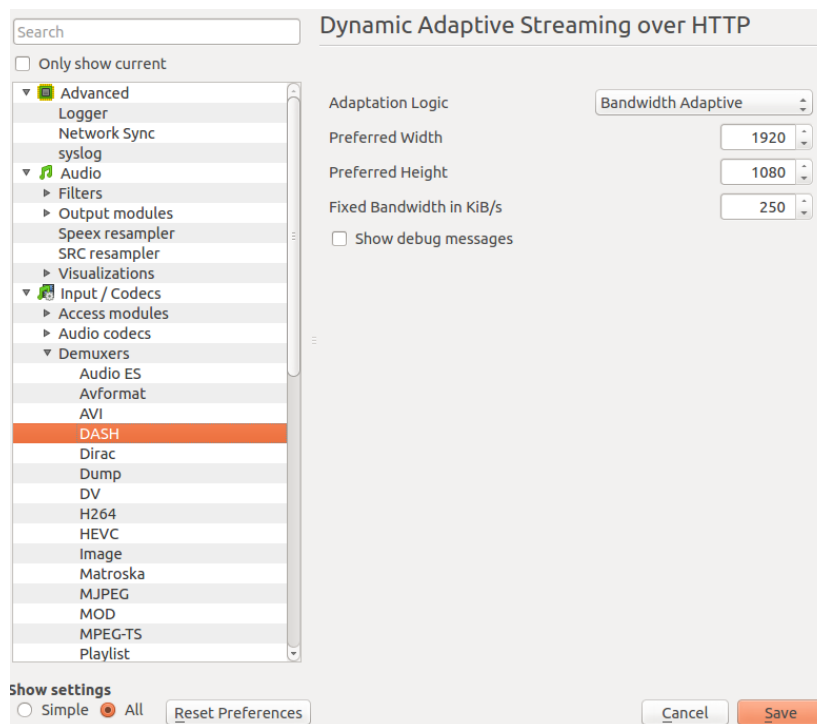
3. For watching the videos, we recommend using the VLC player in version 3.0.0 or above, whose binaries can be downloaded here for multiple operating systems: [VLC 3.0.0](#)
4. Once installed, open Tools and go to Preferences. Click in All in Show settings to show all the preferentes.



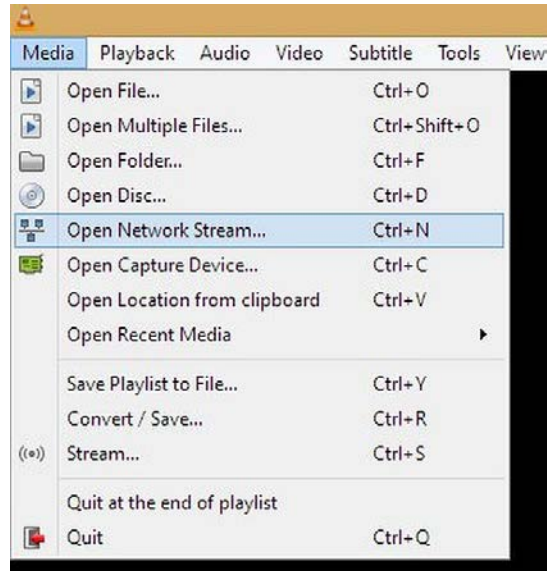
5. Search the Menu Input/Codecs and click in Demuxers.



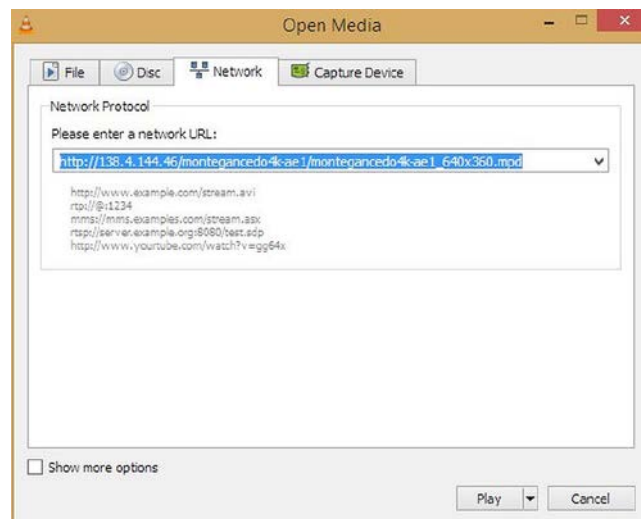
6. Click in DASH and only change the value of the width and height with 1920x1080.



7. Then open “Media” and go to “Open Network Stream”.



8. Write the url of file mpd.



9. And click play.

